

Disc brake - Caliper 45K

Spare parts

Ref.	Fig.	Designation	Part number	Qty	In stock priority ■	Element of fixing Tightening torque (Tt)
1	1	Set of pads type 5 WS1-3 without wear indicator STU	944-60410	1	1	
		Set of pads type 5 WS1-3 with wear indicator ATU	944-60440	1	1	
		Set of pads type 5 WS1-5 without wear indicator STU	947-50130	1	1	
		Set of pads type 5 WS1-5 with wear indicator ATU	947-50160	1	1	
2	2	Spring washer stack	944-49750	1	2	
3	1	Opening spring	947-58050	2	2	
6	3	S/A fixed cam	944-48440	1	2	Screw CHC M12-25 / Tt = 86 Nm Screw H M12-55 + nut / Tt = 80 Nm
7	1	S/A mobile cam	947-58150	1	2	Screw H M12-55 + nut / Tt = 80 Nm
12	3	Free wheel kit	947-58790	1	2	
13	2	S/A direct contact	944-10310	1	1	Screw CHC M6-50 and M6x16 Tt = 10 Nm
		S/E direct contact "BN"	944-11020	1	1	
23	2	Contact SD4-1-01	069-48230	1	2	Screw C M3-20 + nut
		Contact SD4-1-02 "BN"	069-48200	1	2	
14	2	Pushing rod of direct contact	944-10180	1	1	
17	1	Manual release wrench	947-58040	1	2	
20	1	S/A right complete shoe thickness :30 mm	947-58130	1	2	Screw nut + lock washer
		S/E left complete shoe thickness :30 mm	947-58120	1	2	
		S/E right complete shoe thickness :15 mm	947-58810	1	2	
		S/E left complete shoe thickness :15 mm	947-58800	1	2	
21	1	Ring BP25 D25x30x20	049-47088	4	2	
40		Set of seals (not shown)	947-58840	1	2	

■ Priority order of in-stock maintenance by the Customer : 1 : imperative, 2: recommended

ATTENTION !

The 45K calipers must be handled, mounted, dismantled and maintained only by qualified and trained staff.

Only original Stromag France spare parts can be used.

A non conform utilization will lead to a reconsideration of guarantee and responsibilities clauses.



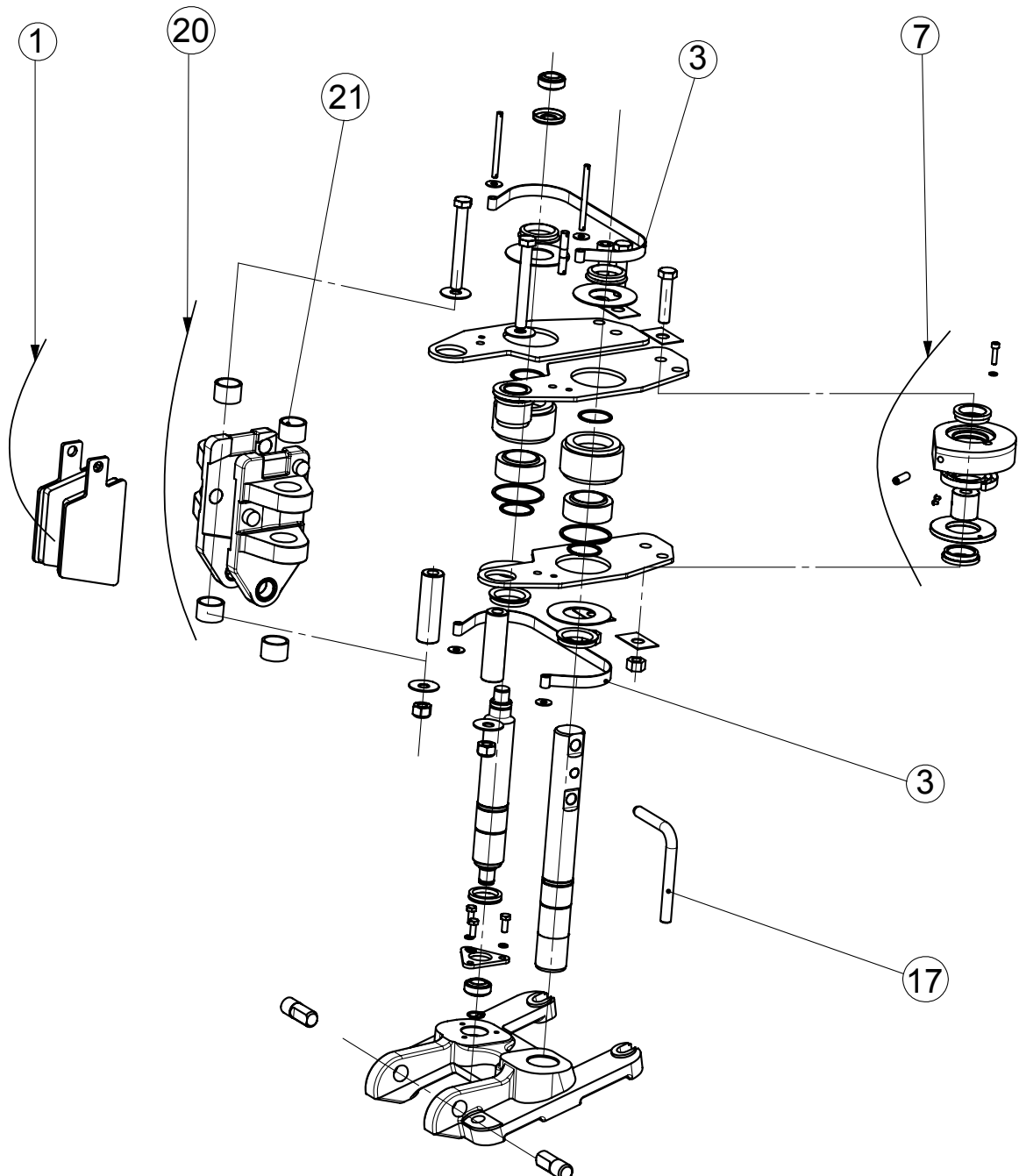
Instructions of this manual must be adhered to, to obtain the performance and the safety of operation of the equipment.

Dimensions	Leaflet No. T00140-01	21/12/07	1/3
Installation and maintenance	No. S00140-01	S00140-01-A	

Disc brake - Caliper 45K

Spare parts

Fig.1 - Exploded view of 45K caliper except electromagnet



Instructions of this manual must be adhered to, to obtain the performance and the safety of operation of the equipment.

Disc brake - Caliper 45K

Spare parts

Fig.2 - Electromagnet exploded view / 45K caliper

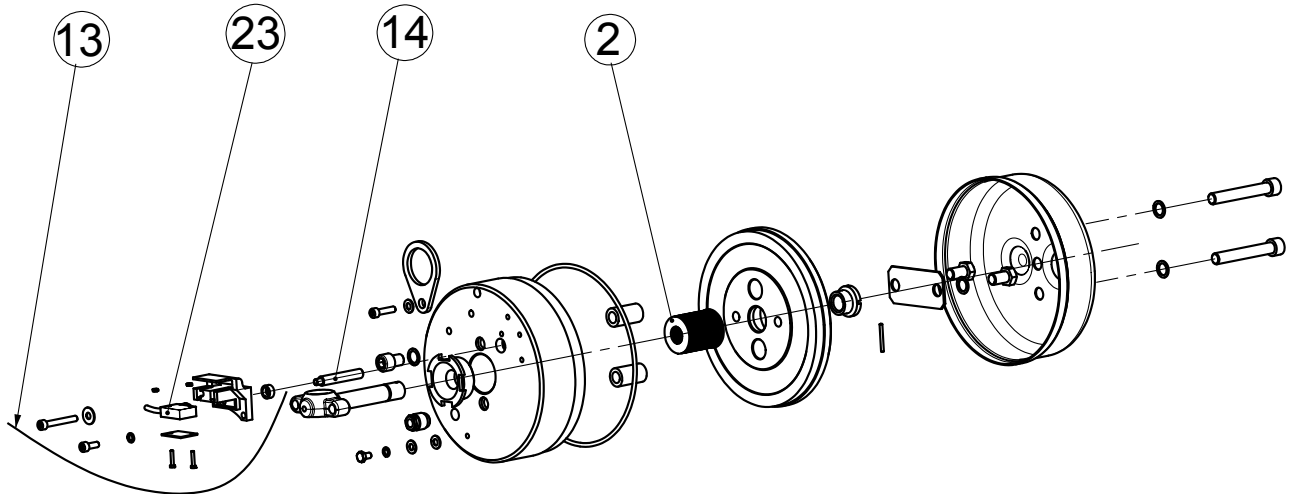
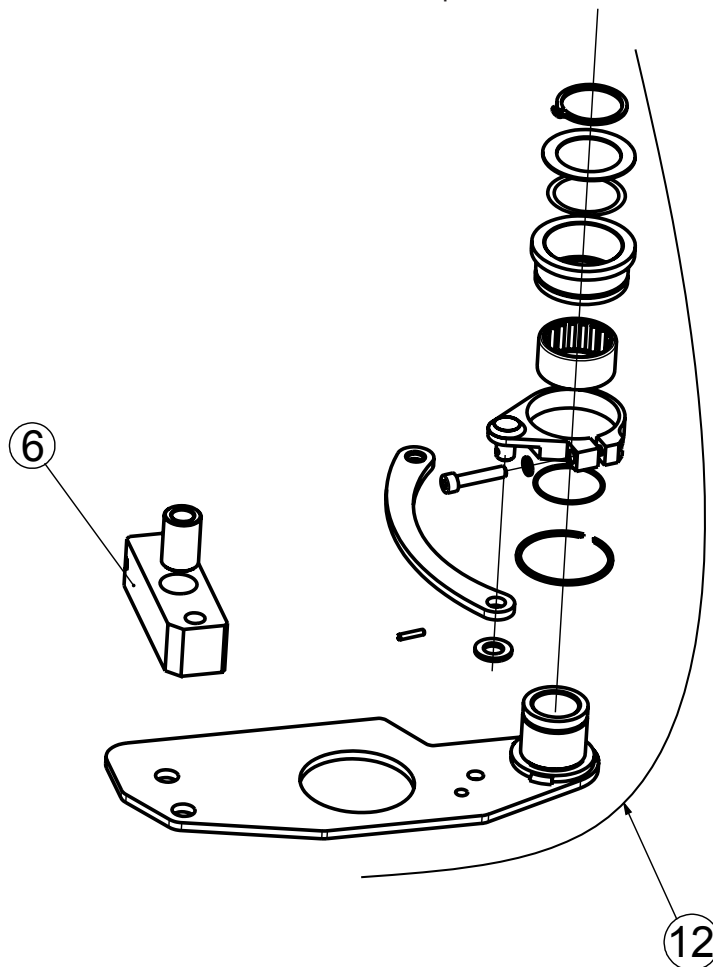


Fig.3 - Exploded view of free wheel kit and fixed cam / 45K caliper



Instructions of this manual must be adhered to, to obtain the performance and the safety of operation of the equipment.